

Federation of Antrobus St Mark's and Great Budworth Primary Schools



'Love one another as I have loved you.' John 13:34

Welcome Back

Welcome back to the final half term of this academic year. I do hope you have enjoyed the two-week half term holiday that we have the luxury of being able to facilitate being a small, church aided school.

We want to make this half term a memorable experience for everyone in our school community, but especially for our year 6 leavers; we have many things planned for them, which we will reveal once we have received confirmation. – Watch this space!

This first week we have received our order of new school lockers. Every child will have their own locker in which to keep their bag, coat, packed lunch (if appropriate) and PE kit. This will hopefully enable us to keep our cloakrooms tidy and reduce the amount of lost property. Today, Friday 14th June, 15 lockers have been allocated to children in class 3. I know the children are excited to have their new lockers, so I am hoping the rest will be fitted and allocated once Mr Bulfin, our site manager, has fixed them safely in position. We will work as quickly as we can to achieve this.

Sadly, due to the wet weather, we have been unable to rehearse for maypole and have had to postpone our Maypole event until July 13th. I do hope you will be able to join us.

Our theme for this half term is Shakespeare's plays and playscripts generally. Class 2 are working on The Tempest and Class 3 on Julius Caesar. Class 3 are starting rehearsals on Cinderella Rockerfella and the excitement is palpable. Scripts and song lyrics have been issued and parts allocated. What a wonderful opportunity this is for our children!

At the end of last term, I sent a letter outlining the teaching structure for our classes in September. To date I have received some feedback from our families. Miss Perry and I held a meeting yesterday for parents to ask any questions they may have concerning the new structure. We had a very positive meeting with the group of parents who attended. We were able to reassure them and yourselves that having spoken with the School Governors and the Director of Education for the Diocese,

closure of Great Budworth School is definitely NOT on the agenda now or in the near future.

We discussed that we are working hard to market the school as a great place to attend and discussed ways of encouraging more families to join us. We discussed the many benefits of small schools: with low adult/pupil ratios being 1:8 enabling us, as professional educators, the opportunity to provide a high quality, focused and an individually tailored education for all of the children in our care; family feel, nurturing, everyone knows each other well, high academic achievement, more opportunity to be chosen to take part in local events and activities as there are fewer children to choose from; the school bringing a sense of community and being at the heart of the community.

We shared that, as a staff, we are working hard to ensure the curriculum we offer is relevant, broad and meets the needs of the children; how we will be planning lessons using objectives from subject skills progression documents to ensure rigour and continued progress with the appropriate support and challenge where necessary. We have ensured the topics and themes for the next academic year will not have been taught to the children before.

As a federation, we will be working together on broadening the opportunities for greater social interaction for example in joint sports tournaments, events organised through the Northwich Education Partnership such as a day at Marbury Park with other year 1 children, Northwich Sings and the Northwich Dance event; through residential, theme days, educational visits, lunches and joint church services.

The parents had some great suggestions for marketing and activities too. You can help to promote our little school too by sharing your positive experiences and our tweets and face book posts. We are planning a special assembly on Monday to share the new structure with the children discussing who they will be taught by, which adults will be in their classrooms and which children they will be with – all as part of the transition process.

We appreciate that when change happens, people become unsettled, questions are asked and information can become misinterpreted. I'd like to remind you of our open-door policy, where we encourage you to come to talk us. We will always listen to you and try to answer your questions honestly. We are also open to suggestions for new initiatives, after all, we are working with you in partnership to do the best for your children. Please do come and speak to either Mrs Corradine or Miss Perry.

We hope that this letter and the information sent out already will provide you with the confidence to continue to entrust us with your child's education, which as a team, will always be our priority.

Community Matters

Another reminder that School Lane (The Cobbles) is a public footpath **not** a road and access to the school is for **staff vehicles and deliveries only**.

Please, in the spirit of community relations, **do not drive down the cobbles** to drop off or collect your children even if they or you are late for school. The only exceptional circumstances are when collecting a poorly child from school or if you are a blue badge holder.



Thank you in advance for your support with this.

After School Clubs and Buddies

After school clubs offer an additional opportunity for the children to learn, explore and have social time after school in a more relaxed environment. We are proud to be able to provide such a range of clubs. Our enrichment curriculum for this half term is as follows:

<u>Monday</u>	Colouring/ craft – Mrs Gould/ Mrs Singh
<u>Tuesday</u>	Eco Club – Mrs Corradine
<u>Wednesday</u>	Archery - Georgia Lunchtime – playground games
<u>Thursday</u>	Oasis – Mrs Ripley
<u>Friday</u>	Boules/Games/rounders - Miss Crowson

Buddies

Buddies before and after club is available every school day from 7:45 am and after school until 4:30 (later times can be accommodated if pre-booked).

It is a real benefit to families providing the security of wrap around childcare enabling families to get to work.

Please call the office if you wish to book a place after school or for breakfast.

Use it or lose it!

Ceri will be setting up the bookings list on School Spider if your child would like to attend.

After school clubs will be charged at £4.00 per session, paid as a block (£24) this half term. Clubs start on Monday 17th June. There are no clubs in the last week.

Collective Worship

Our theme for this half term is **The Miracles of Jesus**. I wonder how many of Jesus' Miracles you can name?

Have a look on You Tube for links to some of the well-known Miracles Jesus performed:

Here's a link to get you started: [What miracles did Jesus perform? - BBC Bitesize](#)

We will continue to explore our core Christian values of Faith Hope and Love, Dignity, Wisdom, Joy, Peace and Community.



It has been lovely to welcome all parents into school on a Friday morning to share in our celebration worship. Please do find time to join us in the hall for a warm drink and welcome after school drop off.

Family Support worker



Mrs Suzanne King



Changing Lives Together provides services across Cheshire, their mission is to find Innovative Solutions for Environmental and Social Challenges which Benefit our Local Communities .

The **Community Groceries** are all about removing food waste, taking surplus stock from Supermarkets and Farmers.



A food shop at the **Very Green Grocery** is at the low cost of **£5**, where they supply a bag of shopping up to a value of **£30**. There is a, reduced cost, **café** available at both of the grocery locations.

Spotlight on Children and Family services in Cheshire:

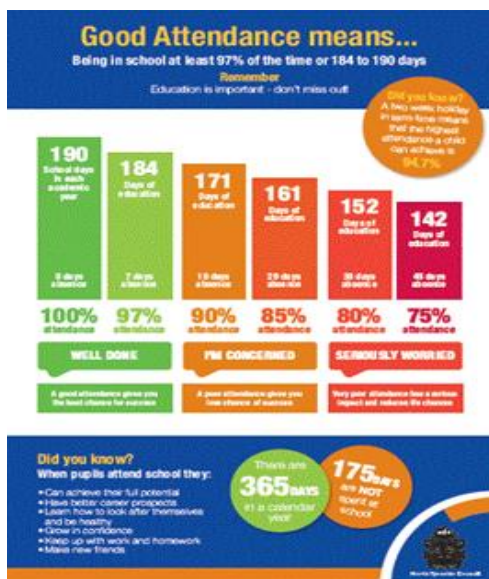


Cheshire Autism Practical Support (ChAPS) was started in April 2010 by three parents who all have children on the spectrum. This charity offers advice, practical support and services across Cheshire for all families whether you have a diagnosis, or not. They currently support over 700 families through:

- Monthly parents' meetings.
- Positive parenting courses helping with behaviour, anxiety etc.
- Activities for children, young people and adults on the spectrum.
- Facebook groups for support, signposting and advice.
- Intensive social skills classes for children.
- Mindfulness courses increasing wellbeing for parents and children.
- Website full of information for parents and professionals.
- Social events for adults on the spectrum.
- Counselling for parents and adults on the spectrum.
- Attention Card and Autism Code Keyring.
- Lego and Play Therapy for children on the spectrum.
- Social skills and Learning4Life programme for adults.

Please contact Suzanne, School Family Support Worker sking@greatbudworth.cheshire.sch.uk , if you would like further information.

Attendance Matters



Regular attendance at school is very important for children to achieve the best they can. If children are absent from school, it not only affects their education but it also has a negative impact on them both socially and emotionally.

School tries to make sure that all our children attend every day. However, we cannot do this alone and need your help, as parents, to ensure your child has the best possible attendance they can have. Letters will be issued notifying you if your child's attendance is falling below 90%.



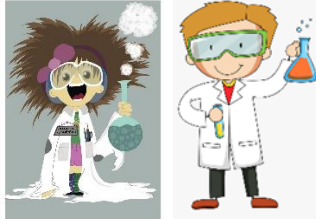
I am **unable** to authorise absences for holidays taken outside of school holiday dates. Fixed penalty notices may be issued for holidays taken in term time.




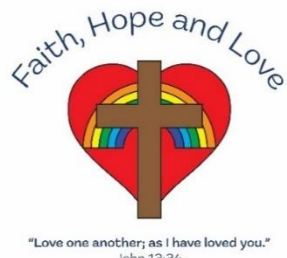
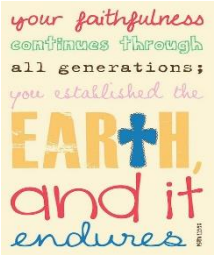
Please endeavour to be on time to school each day.

The school doors open at **8:45am** and **the children are expected to be in school at that time**. Children arriving after 9:00 am will be marked as late. Once the register closes at 9:15am, children arriving at school after this time will be marked as unauthorised unless we have been notified of a medical appointment.

Your ongoing support with this matter would be much appreciated.

Diary Dates

When	Event	What do I need?
Monday 17 th June	The start of Healthy Week . Different activities each day linked to all aspects of health.	Come to school wearing your school PE kit every day this week. (White tee shirt and navy blue/shorts) Wear your school sweatshirt or year 6 hoody as an extra layer.
Tuesday 18 th June	Year 6 GULP (give up loving pop) Health promotion	
Wednesday 19 th June	Progressive Sports: Olympics Theme Day – whole school 	
Wednesday 19 th June	Quad Kids @ CHSL Years 4,5& 6 After school athletics event Cransley Transition day Y6	Parents drop off at the County High School, Leftwich
Friday 21 st June	Sports Day - All Day! 	Come to school wearing your school PE kit. (White tee shirt and navy blue/shorts) Parents are welcome to watch our traditional sports races in the afternoon from 1:30
Mon 24 th June	Cransley Transition Day Y6 Science Week Lots of Science related activities to explore across the week	
Wednesday 26 th June	CORAM Mental Well-being workshops – whole school Dog's Trust workshops – whole school	
Thurs 27 th & Fri 28 th June	Cransley Transition days Y6	

Fri 28 th June	It's your move - talk by Teresa Nixon Y6 in class	
Monday 1 st July	Start of transitions for year 6 to high schools.	Check dates with your high school. Weaverham: Tues-Fri CHS Leftwich: Wed & Thurs Rudheath: Mon – Thurs
Monday 8 th & Tuesday 9 th July	Art Days in school 	Bring in an art shirt on Mon & Tues
Wednesday 10 th July	Year 6 Leaver's service Chester Cathedral and afternoon picnic and river cruise.	(Letter to follow.) 
Thursday 11 th July	Rescheduled Maypole Afternoon Start at 1:30pm Come along and join us as our children entertain you with a traditional afternoon of maypole. 	All welcome. FOTS will be providing refreshments. Pupils to have a white tee shirt and blue shorts/skort for maypole.
Friday 12 th July	Reports Out	
Sat 13 th July	FoTS Summer Fair	Bring along the family for a fun day out.
Monday 15 th & Tues 16 th July	Otters and Antrobus class 2 Residential to Tattenhall	
Thursday 18 th July	Class 3 and Year 6 leaver's Show 6pm	
<div style="display: flex; justify-content: space-around; align-items: center;"> <div data-bbox="183 1854 443 2110">  </div> <div data-bbox="635 1854 922 2110">  </div> <div data-bbox="1129 1843 1343 2101">  </div> </div>		

