

## Summer B Newsletter



'Love one another, as I have loved you.' John 13 v 34

### Welcome Back

Welcome back to school!

We hope that you had a lovely two-week half term and enjoyed some family time in the sunshine. We can't quite believe that we are in the last half term of the school year and that we only have 7 weeks left with our wonderful Year 6 pupils. Last half term flew by and some highlights for us were; Northwich Sings, Golden Mile, Open Day, British Values Day, NEP community art project and the Dogs Trust workshops in school.

This half term brings many more exciting events and enrichment opportunities for our school family so please continue to read below to find out more.

#### PTA



School would like to thank the PTA for the wonderful new forest school shelter that we have in our woodland area. Class 1 have been enjoying their weekly Jo Jingles sessions outside in the woods with the shelter and for this half term all school pupils will benefit during their Tuesday Forest School sessions with Mr Holland and Mrs Bedford.

As we look to the summer term the main event is our annual sports day and village Rose Queen Fete. Preparations well underway for our Sports Day this Friday and we hope to see you all for the afternoon races and BBQ.

The village Rose Queen Fete is on Saturday 6<sup>th</sup> July. School will be walking in the procession with our banner and balloons so please save the date and join us. Last year we had the biggest uptake of support and we want to continue to build on this. Maypole rehearsals are taking place in school on Friday lunchtimes with Ann Bolshaw and Katie Lavender kindly giving up their time to come and teach the children.



Faith, Hope and Love



"Love one another; as I have loved you."  
John 13:34

Our Christian Value this half term is  
**Truthfulness**



We will be discussing this in our daily collective worship slot at 9am. We will share examples from the Bible and daily life as a means of teaching our Christian Values, and we will celebrate successes on Fridays where 'Good Samaritan' awards will be presented.

At the end of each half term, we award our special Christian Value of the half term trophy.

Last half term it was awarded to Miss King for her continued service to the school. Miss King has been working at Antrobus since 1995 and each day she goes over and above to serve the school and its community. Miss King runs our wrap around care and ensures our children have the best start to their school journeys. Recently, Miss King has played a major role in the art project that Class 2 have created for the Barons Quay exhibition showcasing Northwich. We would like to thank Miss King for everything that she does for us each and every day.

We are now looking to award another member of our school family the Truthfulness trophy.

Key Diary dates

Please find below some key diary dates for events during our Summer A Half Term. We endeavour to give you as much prior warning as possible but please to be mindful that these may change and more may be added as the weeks go on. We will try to send reminders out but please do save these dates to your diaries.

| <u>Date</u>                        | <u>What's happening</u>   |
|------------------------------------|---|
| Monday 10 <sup>th</sup><br>June    | <b>School Opens for Summer B</b><br><br>Afterschool clubs will start this week and Forest School sessions will run from Tuesdays.   |
| Monday 10 <sup>th</sup><br>June    | <b>School of Kindness workshop</b><br>Manchester based charity is coming into school to work with all pupils on the concept of kindness in the classroom and wellbeing.   |
| Tuesday 11 <sup>th</sup><br>June   | <b>Forest School, cookery workshops and EYFS/ KS1 water safety talk from Puddle Ducks</b><br>Cookery workshops as part of our healthy week D&T focus.<br>Puddle ducks have kindly offered to speak to all children in Nursery- Year 3 about water safety.   |
| Wednesday<br>12 <sup>th</sup> June | <b>Progressive sports enrichment morning &amp; Parent relaxation workshop</b><br>During the morning the whole school will have an enrichment sports morning introducing some sports that we do not typically offer to our pupils on a regular basis.<br>From 2:10-3pm Anna our wonderful sports coach will be running a relaxation workshop for parents and family members in our school hall. This will focus on breathing exercises and strategies to help tackle anxiety and pressures.<br>This is an adult only workshop and we would love for you to come and join Anna. No need to book just turn up and if you have a mat please bring it along but do not worry if not as we have plenty at school. |

|  |  |
|--|--|
| Friday 14 <sup>th</sup><br>June                                  | <b><u>Sports Day</u></b><br>Please join us from 1:15pm. The afternoon races will start at 1:30 and our BBQ will commence straight after the last race. Please bring along a chair to sit on whilst you watch the races in action.  |
| Tuesday 18 <sup>th</sup><br>June                                 | <b><u>Class 1 sharing worship &amp; Bee Keepers afternoon</u></b><br>Please join us for Class 1's sharing worship at 9am.<br>During the afternoon Class 2 and 3 will meet local bee keepers and have a chat about the importance of bees and how to care for them.<br>There will be the option of creating a beeswax candle to take home for £2.<br>Pre-orders for a space on this candle workshop are available on parent pay/ school spider. |
| Wednesday<br>19 <sup>th</sup> June                               | <b><u>BTales- Jurassic dinosaur adventure show</u></b><br>The Btales are coming into school to perform their new Jurassic dinosaur adventure show. This will explore creation and discuss where dinosaurs could fit into it.<br>We ask for voluntary contribution of £3 per pupil to be paid via parent pay, and our PTA have kindly offered to fund the difference.   |
| Monday 24 <sup>th</sup><br>June                                  | <b><u>Class 2 Pre Tattenhall residential meeting- 3pm</u></b><br>Speak to Mrs Davis-Hilliard about any questions you may have regarding Class 2's residential to Tattenhall. You will be able to find out more about the activities children will be taking part in during their trip.   |
| Thursday<br>27 <sup>th</sup> June                                | <b><u>Year 1's visit Marbury Park</u></b><br>Year 1 pupils will be spending the day at Marbury Park as part of the Northwich Education Partnership of schools. All Year 1's from local schools will be collaborating together for a full day of fun at Marbury.<br>More information to follow.   |
| Friday 28 <sup>th</sup><br>June                                  | <b><u>Music Theme Day</u></b><br>Mr Hathaway is busy planning a whole school music themed day for our pupils. Class 3 will be focusing on keyboard work with Cransley kindly lending us a large number of keyboards.   |
| Tuesday 2 <sup>nd</sup><br>July                                  | <b><u>Hartford Church meeting Year 6 pupils</u></b><br><b><u>New Reception and Nursery settling in session 12-3pm</u></b>  |
| Saturday 6 <sup>th</sup><br>July                                 | <b><u>Village Fete</u></b><br>Please join us to walk in the procession as a whole school family. We have a banner and balloons and would love to have as many families as possibly joining us for the parade from the village hall car park opposite school.   |
| Wednesday<br>10 <sup>th</sup> July                               | <b><u>New Reception/ Nursery parents meeting</u></b><br>Mrs Almond will be meeting new Reception/ Nursery parents for a talk 9-10:30am.  |
| Friday 12 <sup>th</sup><br>July                                  | <b><u>End of year reports out to parents</u></b>   |
| Monday<br>15 <sup>th</sup> -<br>Tuesday 16 <sup>th</sup><br>July | <b><u>Class 2 Residential</u></b>  |
| Wednesday<br>17 <sup>th</sup> July                               | <b><u>Class 3 end of year production dress rehearsal</u></b>   |

|  |  |
|--|--|
|  | Classes 1 and 2 will be watching the Class 3 dress rehearsal alongside the village friendship group at 1:30pm. If you are unable to make the evening production on Thursday 18 <sup>th</sup> please email the school office so we can try to accommodate you for the dress rehearsal.                |
| Thursday 18 <sup>th</sup> July   | <b><u>Class 3 end of year show</u></b><br>Please join us for our end of year production performed by class 3 pupils ad our Year 6 leavers. The show will start at 5:30pm and doors will be opened at 5:15  |
| Tuesday 23 <sup>rd</sup> July  | <b><u>New Reception and Nursery settling in session 9:15-11:45</u></b>   |
| Friday 26 <sup>th</sup> July   | <b><u>Leavers Service at St Mark's Church- 9:15am</u></b><br>Please join us at St Mark's Church for our Year 6 leavers service. Refreshments will be available after the service back at school. We would love for you all to join us to help give our wonderful Year 6 pupils a memorable send off. |
| <b><u>School Closes at 2pm for the Summer</u></b><br>Have a lovely summer holiday! |  |

### **Gentle reminders**



Please ensure that your child comes to school wearing their PE kit on the days they have PE in school. This is to help ensure our pupils receive the full 2 hours of PE entitlement a week and to stop time being lost getting changed and looking for lost PE kits.

Our pupils are to come to school wearing; yellow school PE top, green shorts or black leggings/ jogging bottoms, trainers and a choice of either school cardigan, jumper or hoodie.

Please contact our PTA for pre-loved uniform if you require anything

or visit the website <https://northwickschoolwear.co.uk/collections/antrobust-st-marks-primary-school>

**Nursery and Reception-** PE kit to be worn on Wednesdays.

**Years 1, 2 and 3-** PE kit to be worn on Wednesday and Thursdays.

**Year 4,5 and 6-** PE kit to be worn on Thursday and Fridays.

#### **Attendance Matters**

Please note that the school gate opens at 8:45am. This gives a 15minute window until the register is closed and late marks allocated.

**From 9:15am the school registers will be marked as an unauthorised absence.**

Please endeavour to be on time to school each day. If you need any support, please contact the school office or our family support worker Suzanne King on [sking@antrobust.cheshire.sch.uk](mailto:sking@antrobust.cheshire.sch.uk)

#### **After School Clubs**

Our enrichment curriculum for this half term is as follows:

**Monday** School newspaper club - Mrs Almond

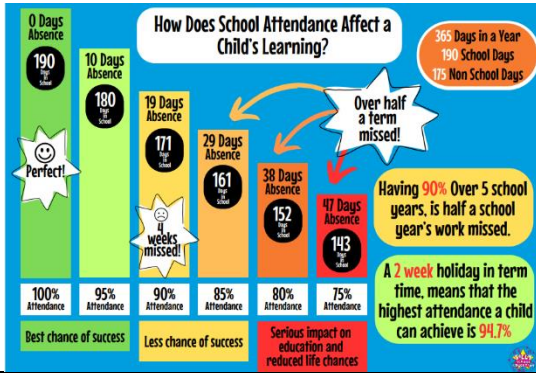
**Wednesday**  
Lunchtime Football

**Thursday**  
Lunchtime Athletics

After School cricket and rounders with Georgia.

Staff will close the gate promptly as we will be having daily collective worship at 9am in the school hall.

\*Please note these clubs will only run if a minimum number is reached to make them viable. If we do not reach that number clubs will unfortunately be cancelled.



### Family Support worker



**Changing Lives Together** provides services across Cheshire, their mission is to find Innovative Solutions for Environmental and Social Challenges which Benefit our Local Communities

The **Community Groceries** are all about removing food waste, taking surplus stock from Supermarkets and Farmers. A food shop at the **Very Green Grocery** is at the low cost of £5, where they supply a bag of shopping up to a value of £30.

There is a, reduced cost, **café** available at both of the grocery locations.

### **Spotlight on Children and Family services in Cheshire:**



Cheshire Autism Practical Support (ChAPS) was started in April 2010 by three parents who all have children on the spectrum. This charity offers advice, practical support and services across Cheshire for all families whether you have a diagnosis, or not. They currently support over 700 families through:

- Monthly parents meetings.
- Positive parenting courses helping with behaviour, anxiety etc.
- Activities for children, young people and adults on the spectrum.
  - Facebook groups for support, signposting and advice.
    - Intensive social skills classes for children.
- Mindfulness courses increasing wellbeing for parents and children.
  - Website full of information for parents and professionals.
    - Social events for adults on the spectrum.
  - Counselling for parents and adults on the spectrum.
    - Attention Card and Autism Code Keyring.
  - Lego and Play Therapy for children on the spectrum.
  - Social skills and Learning4Life programme for adults.

To join ChAPS and take advantage of all the support on offer, they ask that parents become members and make a minimum donation of £10 per month (per family), for adults on the spectrum £5 per month.

Membership forms which are compliant with GDPR are now on the website <http://www.cheshireautism.org.uk/members/membership-application-form/>.

Cheshire Autism Practical Support Ltd  
ChAPS Autism Ark Yarwoods Arm Navigation Road Northwich CW8 1BE  
T 0344 850 8607 E [admin@cheshireautism.org.uk](mailto:admin@cheshireautism.org.uk)  
[www.cheshireautism.org.uk](http://www.cheshireautism.org.uk)

If you would like further information about Changing Lives Together or if you would like to access the School Family Support service, simply drop in on a Monday morning or email Suzanne ([sking@antrobus.cheshire.sch.uk](mailto:sking@antrobus.cheshire.sch.uk)) – Thank you

### **Wrap around care**

Please note that you will need to book your children into breakfast club if you will need to drop them off prior to the gate opening at 8:45am. Any children seen to be left will be taken into school and placed in breakfast club and parents will be charged. This is due to safeguarding and ensuring pupils are not at risk. **Parents of Year 6 pupils are able to let school know via letter/email if they give permission for their child to walk or cycle to school alone.**

Please make sure you contact school if you are needing our wrap around care on our new mobile number which is;

**07752503158**

**If you are running late or the children are playing on the field and staff cant hear the door bell in breakfast or afterschool club then please ring the mobile number above and it will connect you directly to Miss King or Florrie depending on the time.**